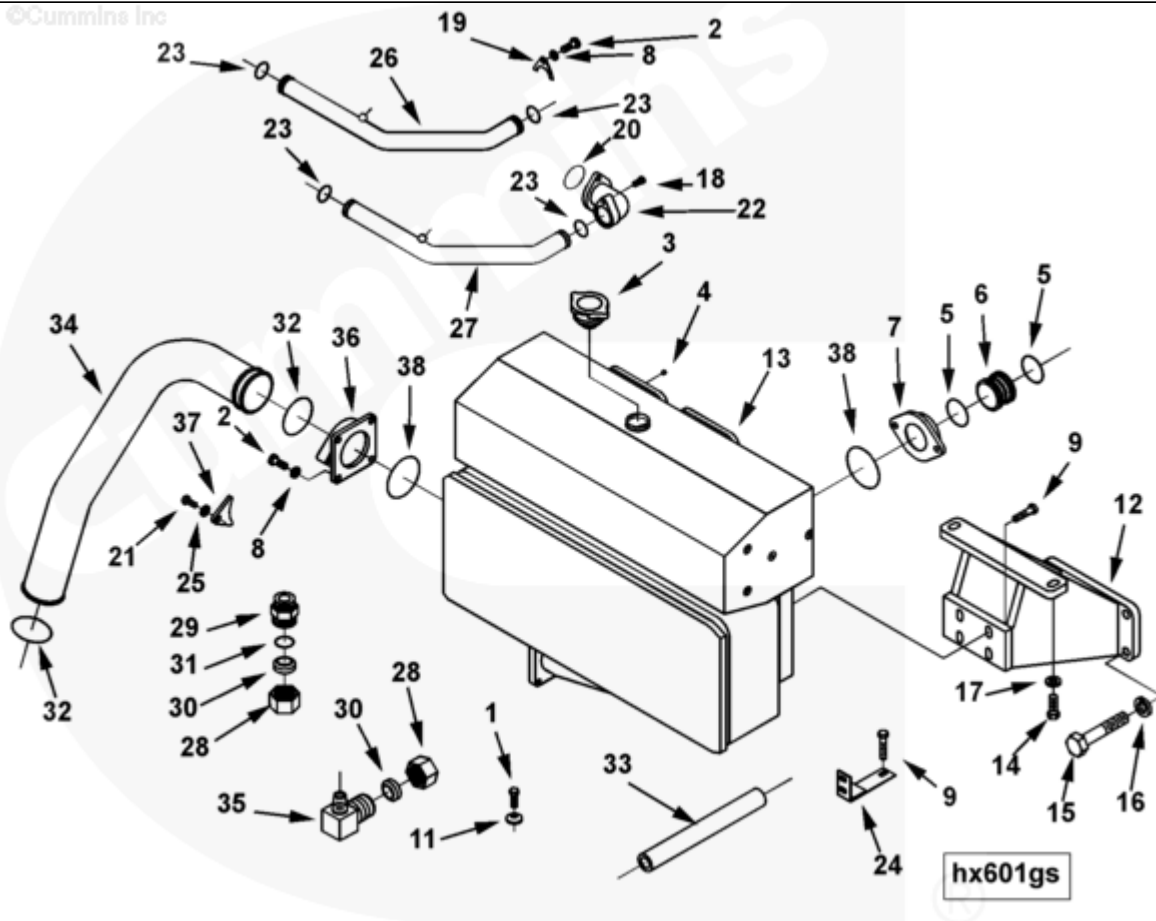




Parts Catalog - Option Detail

Electronic Parts Catalog - Option Detail				
Option	Group	Graphic	Film Card	Date
HX6113-10	08.10	hx601gs	K38	05-APR-03
Engines	GTA38, K38, KTA38GC CM558, QSK38 CM2150 K106, QSK38 CM2150 MCRS, QSK38 CM850 MCRS			



SMALL | MEDIUM | LARGE

Cart	Ref No	Part Number	Part Description	Required	Remarks
View My Cart					
		HX6113-10	Heat Exchanger		Engine mounted heat exchanger...(More)
					located at the front of
					engine.
					Heat exchanger contains two
					seperate bundles for cooling

					both the engine and LTA
					circuits.
					Does not have
					Provisions for mounted gear
					oil cooler. For
					Use with KTA38-M0/m1/m2 and
					KTA50-M2.
<input type="checkbox"/>	1	130228	Hexagon Head Cap Screw	12	
<input type="checkbox"/>	2	3349014	Hexagon Head Cap Screw	12	
<input type="checkbox"/>	3	3393978	Filler Cap	1	
<input type="checkbox"/>	4	3628604	Pipe Plug	3	1/8 - 27 X 0.3 in.
		3631768	Water Transfer Connection	1	
<input type="checkbox"/>	5	3014435	O-Ring Seal	4	
<input type="checkbox"/>	6	3897649	Water Transfer Tube	2	
<input type="checkbox"/>	7	3897652	Water Inlet Connection	2	
<input type="checkbox"/>	8	3897748	Plain Washer	4	
<input type="checkbox"/>	9	S 120	Hexagon Head Cap Screw	6	3/8 - 16 X 1 3/4 in.
<input type="checkbox"/>	11	3043642	Spring Washer	6	
<input type="checkbox"/>	12	3634333	Heat Exchanger Bracket	1	
<input type="checkbox"/>	13	4078338	Heat Exchanger	1	
<input type="checkbox"/>		4019782	Tank Assembly Cover	1	
<input type="checkbox"/>		3393702	O-Ring Seal Cover	1	Front cover
<input type="checkbox"/>		3393703	Tank Assembly In-Out	1	
<input type="checkbox"/>		3393704	Tank O-Ring Seal	1	Rear housing
<input type="checkbox"/>		3393705	Sight Glass	1	
<input type="checkbox"/>		3076611	O-Ring Seal	2	LTA fitting
<input type="checkbox"/>		3393707	Seal , Lta Fitting O-Ring	2	
<input type="checkbox"/>		4078339	Core Assembly	1	
<input type="checkbox"/>		68241	Zinc Electrode Plug	1	
	14	S 145	Hexagon Head Cap Screw	2	1/2 - 13 X 1 1/4 in.

<input type="checkbox"/>					
<input type="checkbox"/>	15	S 174	Hexagon Head Cap Screw	4	3/4 - 10 X 4 in.
<input type="checkbox"/>	16	S 611	Lock Washer	4	3/4 in.
<input type="checkbox"/>	17	S 624	Plain Washer	2	1/2 in.
<input type="checkbox"/>	18	S 171 A	Hexagon Head Cap Screw	4	5/16 - 18 X 1/2 Inch.
<input type="checkbox"/>	19	214617	Tube Clamp	4	
<input type="checkbox"/>	20	3077793	O-Ring Seal	2	
<input type="checkbox"/>	21	3349015	Hexagon Head Cap Screw	4	
<input type="checkbox"/>	22	3635078	Water Transfer Connection	2	
<input type="checkbox"/>	23	3393301	O-Ring Seal	4	
<input type="checkbox"/>	24	3393657	Water Tube Bracket	1	
<input type="checkbox"/>	25	3897359	Plain Washer	8	
<input type="checkbox"/>	26	3897692	Water Transfer Tube	1	
<input type="checkbox"/>	27	3897693	Water Transfer Tube	1	
<input type="checkbox"/>		3348863	Male Connector	1	
<input type="checkbox"/>	28	3348858	Tube Nut	1	
	29	3348859	Male Connector	1	
<input type="checkbox"/>	30	3348860	Ferrule Seal	1	
<input type="checkbox"/>	31	3348861	O-Ring Seal	1	
<input type="checkbox"/>	32	3393303	O-Ring Seal	2	
<input type="checkbox"/>	33	3393523	Water Transfer Tube	1	
<input type="checkbox"/>	34	3393524	Water Transfer Tube	1	
<input type="checkbox"/>		3629794	Male Union Elbow	1	
	35	4019629	Male Union Elbow	1	
<input type="checkbox"/>	28	3348858	Tube Nut	1	
<input type="checkbox"/>	30	3348860	Ferrule Seal	1	
<input type="checkbox"/>	36	3897653	Water Outlet Connection	1	
<input type="checkbox"/>	37	3637472	Tube Clamp	1	
<input type="checkbox"/>	38	3897787	O-Ring Seal	5	

